

TRULY PLAZA

714 S. WASHINGTON AVE
CLEVELAND, TX



AVAILABLE FOR LEASE

FOR MORE INFORMATION:

KARIM NOORUDDIN

karim@madisonaveproperties.com

(713) 875-6644



PROPERTY OVERVIEW

LOCATION

714 S. Washington Ave
Cleveland, TX 77327

BUILDING SQFT

23,252 SF

YEAR BUILT

1970

LOT SIZE (ACRES)

2.16 AC

COUNTY

Harris

ZONING TYPE

Commercial

ADDITIONAL INFORMATION

Located in the heart of downtown Cleveland, TX, 714 S Washington Ave is a prime commercial property offering excellent visibility and access. Situated along a major thoroughfare, this versatile space is perfect for retail, office, or service-oriented businesses. Ample parking and flexible layout make this property an ideal investment for long-term success in Cleveland's vibrant commercial district.

DEMOGRAPHIC SNAPSHOT



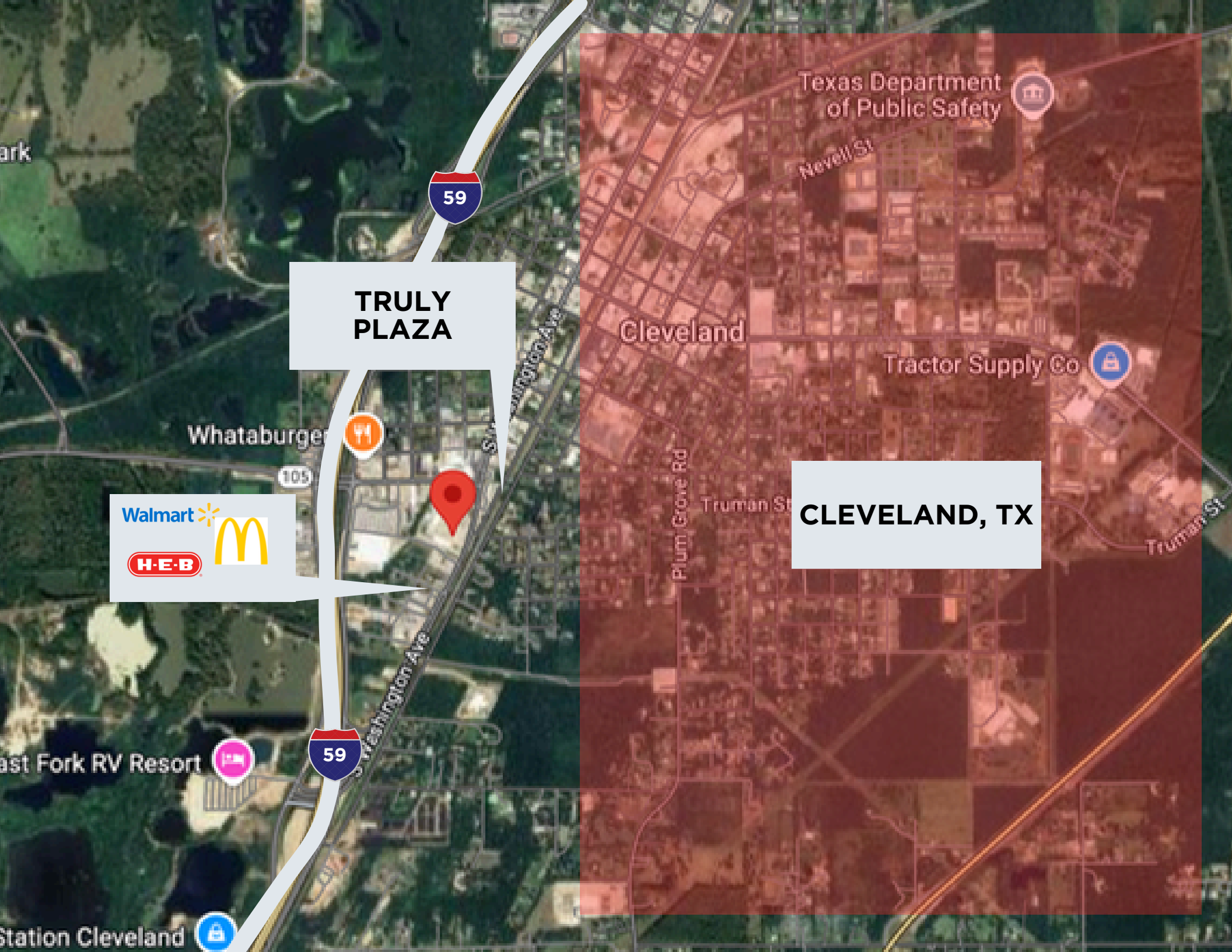
POPULATION

1 mile	3,046
3 mile	11,755
5 mile	17,636



HH INCOME

1 mile	\$68,000
3 mile	\$59,463
5 mile	\$65,726



TRULY PLAZA

Walmart
H-E-B
McDonald's

CLEVELAND, TX

Texas Department of Public Safety

Cleveland

Tractor Supply Co

Whataburger

105

59

Washington Ave

Nevell St

Plum Grove Rd

Truman St

Truman St

ark

East Fork RV Resort

Station Cleveland